



GROWING TOGETHER

Honoring Dedication, Celebrating Compassion, Supporting Our Care Team



Hospital Week 2025 May 12 - 16, 2025

'Ohana Tree Collage Instructions

Celebrating our growth together as one big 'ohana!

Please participate in decorating a leaf for the 'Ohana Tree Collage for Hospital Week. You can use whatever materials you have on hand. Leaf templates will be provided for you or you can download the template from the HBMC Foundation website.

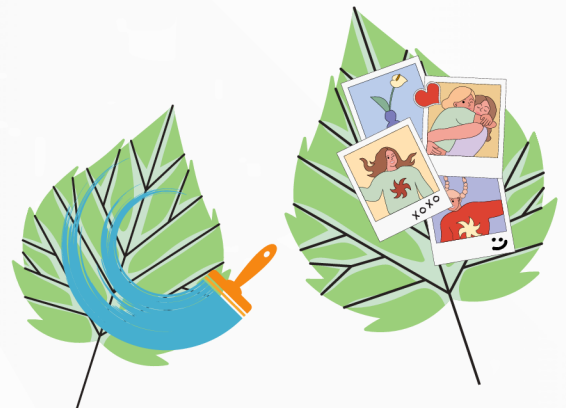
Guidelines:

- Include your name, position and years of service on the front.
- Be wary of how much your decorated leaf weighs. Leaves will be adhered to the wall and will need to remain there for an extended time.
- Please decorate your leaf with Hilo Benioff Medical Center policy in mind. Make sure your artwork is family friendly.
- Green cardstock leaf templates will be/have been provided. The plain template is available for download on the HBMC Foundation website. If you would like a new green template, contact the Foundation to have one sent via inter-office mail.
- Printing a downloaded template works best with cardstock paper.
- There will be an opportunity to decorate a leaf in the 'Ohana Café on Monday, May 12, 2025

If you are decorating a leaf ahead of Hospital Week, turn decorated leaves in to:

HBMC Foundation
Attn: HW Activities
140 Rainbow Drive, Hilo, HI 96720
(Inter-office mailing available)

By Friday, May 9, 2025



Collage will be showcased During Hospital Week in the hall outside of the 'Ohana Cafe.



Scan the QR code to download your leaf template today!

For questions please contact:
Hilo Benioff Medical Center Foundation
(808) 932-3636
hbmcfoundation@hhsc.org

www.hbmcfoundation.org/east-hawaii-region/hospital-week